

Stephen Burlingham

New Work 2015

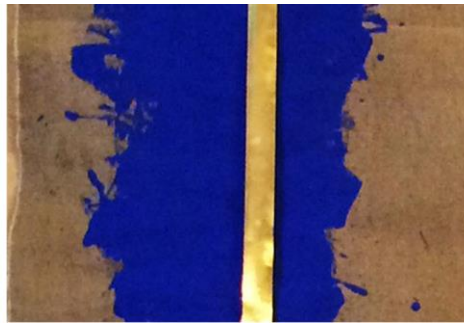
The Tangible

In my work as a painter and sculptor I have always sought natural materials.

Looking to these noble elements as a vessel to translate the immaterial into the real.

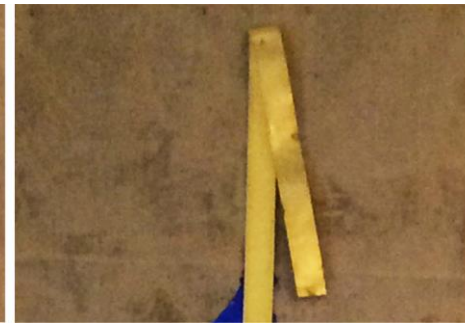


Bronze



Chrome

Marble



Gold

Graphite

Aluminum

I use natural linen that I prepare in different ways depending on the materials I will apply on its surface. Some of the linen I choose to use - is decades old.

I then apply color using either dry pigment or oil based, depending on the degree of light refraction that I am targeting. The only dry pigments I use are those made from natural minerals.

They include
Red Cadmium,
Blue Aluminum,
White Titanium,
Black Iron Oxide,
Blue Cerulean,
Cobalt Violet
Brown Raw Umber,
Yellow Ochre,
Green Chrome.





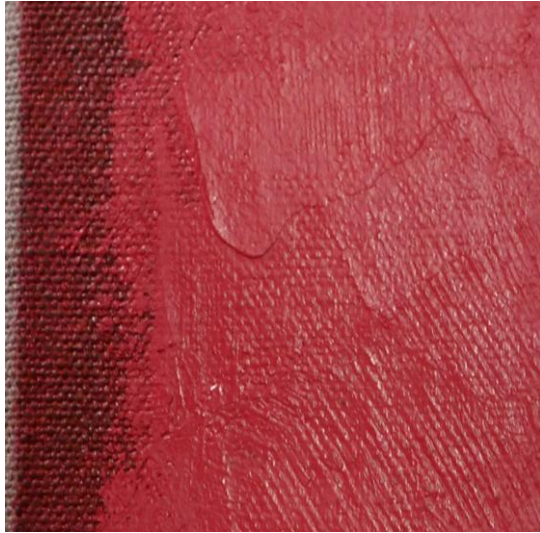
The eruptions
of pigments
are created
by splashing and
manipulating the
liquid color.

The color is
obtained by
mixing dry mineral
pigments with
naturally derived
glue.

This follows the
method used
for centuries by
artisans to
protect the linen
fiber from the other
elements.

La Voix (left)





In addition to working with pure minerals, the oils I have chosen for this body of work are made as they have been for centuries. And contain no modern Substitutes.



The manufacturer uses only pure materials never any synthetic substitutes.

Their purity is part of my expression.

In The Wind (top right)
There (bottom right)



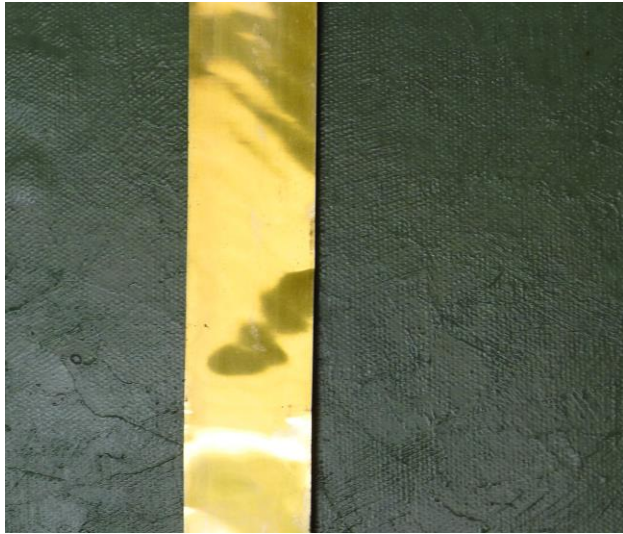
The metals that I select for each piece are prepared and molded by hand in a process that involves time and heat.

Once the metal is molten it is manipulated to develop a shape according to the piece for which it is intended.

Each metal requires a different treatment and involves specialized techniques and equipment.



Melting gold for The Whisperer



I select the metals, and combine them with the other minerals, according to their attributes. Their purity, their oxidation qualities and their color. I do this, fully acknowledging their long history, and the magic they share with mankind.

The Commissions

I believe that the elements contained in The Tangible artwork resonate not just with me, but also with others.

I have been asked to consider making commissions. For these commissions, I work with the collector in selecting the color, the minerals and the metals. I construct the portrait. Recreate the space.

The Whisperer (2014) is the portrait of the collector's friend and incorporates gold that was significant in the life of the the subject of this painting.



The Whisperer
18kt Gold and Titanium on Canvas

(clockwise)

Eterna
Dvergnes
Metamorphosis
Olivia Defiant





Astralis and Beginnings II in the studio



This new series of paintings is
the destination of a journey to
discover the unseen qualities of the
materials that we are born of.

The tangible that leads beyond.

The METAL
The MINERAL
The ORGANIC

Stephen Burlingham

RECENT EXHIBITIONS

ART & DESIGN COMMISSIONS & PROJECTS

- *La Voix Commission*, (New York) Multimedia project exploring natural pigments and metals, August 2014
- *Manhattan Series*, (New York) Works on Paper Waterfall Mansion Gallery, July 2014
- *Be As You Are*, (Bodrum, Turkey) Monumental Stone Sculpture Installation City of Bodrum, September 2013 - Present
- *The CROSSING Paintings*, (Bodrum, Turkey) Large Scale Oil on Canvas Shamana Art Project, August 2013
- *Stephen Burlingham Jewelry*, (Moscow) Haute Joillerie JART Jewelers, January 2013
- *The Moscow Works*, (Moscow) Large Scale Oil on Canvas Yudashkin OIOIOI Gallery, December 2012
- *Anastasia Suite Commission*, (St Petersburg) Design and Production 2013
- *Byzantium Jewelry Collection*, (New York & Luzern) Stephen Burlingham Design and Production 2000 - Present
- *LH*, (New York) Lifestyle and Home Accessories Concept Development and Design 2008 - 2010
- *SAVE Project Sculpture Commission*, (New York) President George H. W. Bush; President Clinton; Melinda Gates 2007
- *truly Parfum*, (New York, Paris, and Moscow) Vessel and Fragrance Design *Stephen Burlingham* 2004-present
- *Tiffany & Co.*, (New York) Jewelry and Sterling Sculpture Accessories; Design and Production
- *Cartier*, (New York and Paris) Jewelry Design and Concept Development Le Must de Cartier
- *Brunschwig et Fils*, (New York) Textiles and Wallpaper Design

contact: Info@Stephen-Burlingham.com

www.stephen-burlingham.com

www.luxedesign.com